

# ST MARY & ST PETER NEWSLETTER

## March 2021



*A free newsletter published by the church  
for every home in Boxted & Langham*

**Cover Picture:** *Daffodils*. Reproduced with kind permission of Andrew Stacey .

## SERVICES

**7th March** - 10 am - The Eucharist via 'Zoom'

**14th March** - 9.15 am - "Messy Church" via 'Zoom' 10 am - The Eucharist via 'Zoom'

**21st March** - 10 am - The Eucharist via 'Zoom' 4 pm - DEEP service via 'Zoom'

**28th March - Palm Sunday** - 9.15 am - The Eucharist via 'Zoom'

**2nd April - Good Friday** 10 am - Reflection & dramatic readings via 'Zoom' 2 pm - *An hour at the Cross* - meditation via 'Zoom'

**4th April - Easter Day** 6.30 am Sunrise service - gathered outside at St Peter's 10 am Easter Eucharist via 'Zoom'

*Hopefully - depending on the situation -10 am - Easter Eucharist gathered outside at St Mary's.*

Email Jo Russell, Church Administrator, for the Zoom link (lwb.wb.gh.parishes@gmail.com). A recording of each service will be on the website on Sunday afternoon.

The Churches of St Mary's Langham and St Peter's Boxted



**Are you elderly or vulnerable and live in the Parish of Langham with Boxted? Do you need help with transport to an important appointment, collection of prescriptions or just a friendly visit?**

**Call so that we can help you, Monday to Friday, 8am to 7pm**

**Monday.....230525 or 272773**

**Tuesday.....273804 or 271079**

**Wednesday....272755 or 272774**

**Thursday.....323007 or 07765 037892**

**Friday..... 271813 or 609917 or  
07598133413**

**Please telephone the number(s) shown for the DAY ON WHICH YOU MAKE YOUR CALL (not the day of your appointment). If there is no reply, please do not leave a message but RING ANY OTHER NUMBER.**

Revised 15<sup>th</sup> January 2021. Any queries please ring the Organiser,  
Arabella Brentnall 01206 272013

## ACCESS to CHURCHES

### St Mary's, Langham

The precautions recommended for Covid 19 security have been completed in St Mary's Church and the church is **open again** for private prayer.

### St Peter's, Boxted

The necessary risk assessment has been completed for St Peter's and this church **will remain open each day** for private prayer

**Deadline for submissions for the April edition: 15th March**  
**Contact the editor via email: lwbnewsletter@gmail.com**



Welcome to the March issue. This month we are fortunate to have another contribution from the Langham Heritage Group covering a notable figure from the inter-war years whose earthly remains are to be found in the churchyard at Langham. Max Plowman's connection to the parish arose through his purchase of *The Oaks* on School Road.

We also have the pleasure of meeting (below) our new Assistant Curate following the retirement of Mandy Elmes. I am sure we all wish her a warm welcome.

As the weather begins to improve and Eastertide approaches, we may reflect on how fortunate we are to have such wonderful countryside to enjoy, all on our doorstep — and I write this in mid-February with several inches of snow on the ground. The forecast is for bright days to come shortly — I'm sure we could all do with some of those!

*Steve Pollington*

*Editor*

*Hello -*

I am the Assistant Curate to the parishes of West Bergholt, Great Horkesley, Langham with Boxted, and also St Luke's in Highwoods, and have benefitted so much from Rev Mandy's wisdom and experience as she helped me learn about rural multi-parish ministry.

I thought you might like to know a little about me and how I became a priest. I have always lived in Essex, was born in Brentwood, spending my childhood and teenage years there. I have always sensed God's presence in my life and was baptized and confirmed in St Thomas' Church, Brentwood.

I enjoyed working for a stockbroker, and then after a break to bring up my 3 children, trained as a senior manager, developing a career in sales and marketing.

In 1994, following an Alpha course, I encountered Jesus afresh at the Bradwell pilgrimage. With renewed faith and responding to a strong sense of God's call on my life in 1999, together with my husband Tim, we downsized and moved to a village near Maldon. God quickly led me into



Christian ministry working for the charity Prison Fellowship which was an exciting and challenging experience. I helped develop their ministry throughout England and Wales, and also in other countries, particularly training volunteers to deliver the OCN-accredited restorative justice course Sycamore Tree (based on the story of Zacchaeus), which enables prisoners to learn about, and take responsibility for, the effects of crime on victims and communities.

I love helping people develop, grow and flourish in their lives - I've been involved in healing prayer ministry, helped open the Oak Tree Coffee House for St Luke's church, managed Colchester's homeless centre Beacon House, and was Chaplain at the Gilbert secondary school. I'm now looking forward to God continuing to use my gifts, skills and experience in the rural parishes.

*Reverend Anne Mason*

## *Langham Parish Council Report –*

*January/February 2021*

**L**angham Parish Council meets monthly (excluding August and December) on the first Wednesday of the month at 7.30 pm. Owing to the Covid-19 restrictions, meetings take place remotely by Zoom. Any members of the public wishing to join the meeting should e-mail the Clerk, Carol Harbach, on [clerk@langhamparishcouncil.co.uk](mailto:clerk@langhamparishcouncil.co.uk). Questions are taken from members of the public as part of the agenda which also includes items relating to transport, planning, footpaths and other matters affecting the village. Detailed information on these and other matters are available on the website [www.langhamparishcouncil.co.uk](http://www.langhamparishcouncil.co.uk)

The Emerging Local Plan (ELP) from Colchester Borough Council (CBC) has been exercising us over the last five to six years, with discussion, debate, meetings and representations by the Parish Council, interested parties and members of the public. CBC allocated three sites for potential development in Langham, two in School Road for 40 and 30 dwellings respectively and one in Wick Road for 10 dwellings. A speculative application was made for 46 dwellings in School Road by Linden Homes Ltd., which received conditional approval by CBC as the planning authority in 2020. Work on the site began at the beginning of February. A preliminary scheme has now been put forward for 30 dwellings on the second allocated site in School Road by Williamson Developments Ltd. A promotional document seeking the views of residents has been circulated by the company.

The Parish Council has also distributed a survey questionnaire on this subject and we would encourage as many as can to reply in the reply-paid envelope.

The questionnaire can also be found on the website above, completed and returned to the Clerk.

**U**nder the s106 agreement signed off by CBC and the Developers in December Langham will benefit from improvements to the Community Centre, Community Shop, Pre-School and Recreation Ground with the available funding. These projects are being co-ordinated by the Parish Council and the improvements will bring about new facilities and lasting enhancements for the benefit of the village and the wider community.

The Clerk has received many notes of appreciation and thanks for the Christmas hampers delivered to deserving residents in December. We are gratified to learn that this gesture of goodwill, at what was a difficult time for many, was so well received.



The Parish Council continues to monitor traffic in the village and surrounding area. Owing to current restrictions and the very low traffic levels, the planned traffic survey has been delayed until more normal conditions are experienced. The Parish Council is monitoring the situation with regard to two significant Ardleigh planning applications at the Old Ipswich Road on the approach to the Ardleigh Interchange. If approved, movement of heavy goods vehicles through the village could increase significantly.

A number of people have expressed an interest in filling the vacancy on the Parish Council and we are currently discussing the nature of the role of a Parish Councillor with them.

***Tony Ellis***

# LOVE Langham

We are here for you...  
for shopping & part of your daily exercise



## Langham Community Shop

Open 8.45am to 4pm Monday to Friday  
9am to 12 Saturday, 9am to 11.30am Sunday



**Post Office** Monday 9am to 12.30pm



## Coast to Coast fresh fish

Second & fourth **TUESDAY** of every month  
3pm to 4pm  
(12<sup>th</sup> & 26<sup>th</sup> Jan, 9<sup>th</sup> & 23<sup>rd</sup> Feb, 9<sup>th</sup> & 23<sup>rd</sup> Mar)



## The Cheese & Pie Man

Every **WEDNESDAY**  
8.30pm to 1.30pm



**Post Office** Thursday 12.30 to 4pm



## Crumb & Brew

Every **THURSDAY**  
11.30am to 3.30pm  
*Finest coffee, tea, hot chocolate & cakes*



## Howe & Co Fish & Chips

Our friend Renu is here  
Every **FRIDAY**  
11am to 2pm

# LANGHAM Community SHOP

communityshoplangham@gmail.com 01206 272431  
www.langhamcommunityshop.co.uk find us on facebook

*Will remain open*  
**8.45am to 4pm Monday to Friday**  
**9am to 12 Saturday**  
**9am to 11.30am Sunday**

We are here for **orders & collections**  
*deliveries by arrangement*

**call 01206 272431**

or email [communityshoplangham@gmail.com](mailto:communityshoplangham@gmail.com)

**by 11am to place your order**

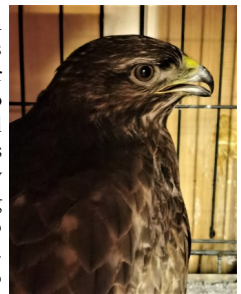
*Thank you* for your continued support

# SESAW

**M**any of us have come to acknowledge the truth of that old adage, 'You don't know what you'll miss until it's gone', be it a person, a pet or the disrupted rhythm of life.

The current situation has brought home to us at SESA, how much we miss the help and commitment received from Firms in the past. It's very apparent just how much hard work and effort they put into helping us maintain the kennels and catteries on site, thus giving us more time for the animals. That said we are still here, a bit scruffier, up to our ears in mud but never the less the animals are clean, warm in their heated kennels, well fed and loved,

So what's to moan about? Spring is on its way, it will get dryer and we look forward to releasing a Buzzard that was bought into us starving. It is now eating well and waiting for better weather to go back to its territory. It is a similar scenario for a Barn Owl which will be taking wing in the near future. So don't forget, if we can help we are here, operating nearly thirty years and facing the future with hope and compassion."



That's enough for now, Mum. It's time for you to feed all the animals including me, your usual correspondent,

Kenny (the Boss) Chihuahua.

Suffolk & Essex Small Animal Welfare, Reg.Charity  
No.1124029, Stoke Road, Leavenheath, CO6 4PP. Tel:  
01787 210888 [www.sesaw.co.uk](http://www.sesaw.co.uk)

## LANGHAM WITH BOXTED PAROCHIAL CHURCH COUNCIL.

*Dear Neighbours,*

I think we were all taken aback by the sudden announcement of Revd Mandy's retirement from her position as our Rector at the end of last month. Her husband Paul's accident has turned out to be much more serious than we might have anticipated and he continues to be on a long road to full recovery. Our hearts go out to them both at this difficult time made more stressful by the restrictions on hospital visiting imposed by the pandemic. We very much hope that they will soon be able to enjoy some tranquil and happier times together.

Many of you will no doubt be wondering who will be leading our two churches in the future and I am pleased to report that the PCC has already been in helpful pre-vacancy discussions with Bishop Roger together with the PCCs of West Bergholt and Great Horkesley. Meanwhile the day-to-day running of our two churches is the responsibility of our church wardens overseen by the Area Dean, Revd Canon Paul Norrington.

We very much look forward to the time when we can meet together in person and are already working to put together a provisional rota of services with the help of our curate Revd Anne Mason. We hope to see more of Anne and her husband Tim in the near

future especially as they have recently moved from Highwoods to live in Great Horkesley.

Until then we shall continue to hold weekly services together with West Bergholt and Great Horkesley churches on Zoom. Should you wish to attend at 10am on a Sunday morning, please contact our administrator Jo Russell on **[lwb.wb.gh.parishes@gmail.com](mailto:lwb.wb.gh.parishes@gmail.com)**

to receive details of the link.

Alternatively, a recording is available from Sunday afternoon each week at

**<https://lb-churches.co.uk/streamed-services/>**

Jo can also provide details of Bible study and prayer groups as well as being the first line of enquiry for baptisms, weddings, funerals and prayer requests. You can reach her by phone 01026 243683 but if she is out of the office, please leave a message on the answerphone.

Lastly, may I remind you that **both St. Peter's Church Boxted and St. Mary's Church Langham are open every day for private prayer.** Everyone is welcome to drop in whether or not you happen to be a regular church-goer.

Wishing you good health and happiness in the month ahead.

*Patsy Ann Maggs*

Vice Chair, Langham with Boxted  
Parochial Church Council.

# MAX PLOWMAN

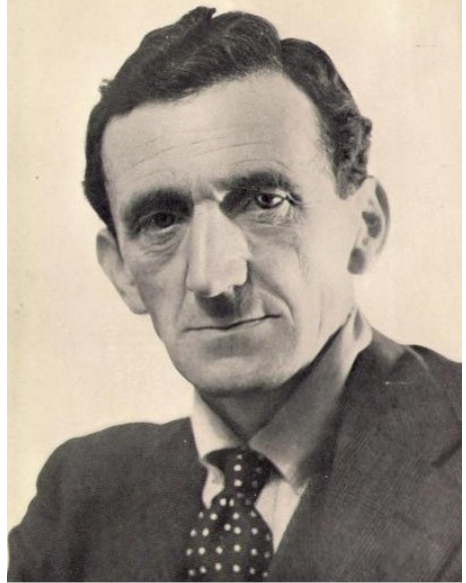
## AND THE ADELPHI CENTRE

Ian Hollands

Simon Gallup's article "*Mystery of The Oaks*" in the February issue brings to mind the elegant headstone<sup>1</sup> at the grave of Max Plowman in Langham Churchyard.

Mark Plowman, always known as 'Max', was born on 1<sup>st</sup> September 1883 into a prosperous family of Plymouth Brethren. After school, he worked for ten years in the family brick-making business but, abandoning formal religion, took to journalism and writing Romantic poetry. By the time of his marriage in 1914 to Dorothy Lloyd Sulman, also a poet, he had gained distinction for his studies of the poet William Blake and as a poet in his own right.

Although opposed to war, shortly after its outbreak in 1914 Plowman enlisted as a Field Ambulance orderly and was subsequently commissioned into the West Yorkshire Regiment, writing in justification: "*Who am I that I should say to another man – You do my killing? One either believes in active resistance or non-resistance...*" He saw front-line action from July 1916 but by October he had developed overwhelming doubts about the morality of war. In January 1917 he was severely concussed by a shell-



*Max Plowman*  
*Photographed at Langham, 1936*

burst and was invalided home, being for many months treated for 'shell-shock'.

During his treatment, Plowman's pacifist convictions were strengthened and in January 1918, after publishing an anti-war polemic "*The Right to Live*", he resigned his commission but was court-martialled and dismissed from the army. He later explained his actions in the tract "*War and the Creative Impulse*", which defined the socialist-pacifism which he asserted for the rest of his life.





### *Plowman's grave in Langham churchyard*

In 1927 he published, under the *nom de plume* "Mark VII"<sup>2</sup>, an account of his experiences in "*A Subaltern on the Somme*", a well-regarded volume in the anti-war literature of the period.

**B**y the 1930s, Plowman had gained scholarly status as an expert on William Blake<sup>3</sup>, with which his pacifist philosophy was closely connected. In 1929 he had met John Middleton Murry (1879-1957), a socialist pacifist writer and critic, their friendship enduring for the rest of Plowman's life. He joined Murry in developing "*The Adelphi*", a socialist literary monthly, becoming its editor from 1938. Contributors to "*The Adelphi*" included

Aldous Huxley, George Orwell (another close friend), D H Lawrence and Dylan Thomas.

In 1934 Murry bought *The Oaks* at Langham, where Plowman and he established the Adelphi Centre as a pacifist community for, in Murry's words, "*the study and practice of the new socialism*" and, in Plowman's, "*works of constructive pacifism*". The Centre combined a community farm and market garden with educational activities directed towards the regeneration of society.

**A** notable feature of the Centre was the annual summer school attended by literati such as Vera Brittain, Jack Common, George Orwell and John Strachey, lecturing on politics, philosophy and literature. Living at the Adelphi Centre, Plowman remained the editor of "*The Adelphi*" and a prolific contributor to magazines.

In 1935 Dick Sheppard formed the Peace Pledge Union (PPU), Plowman (who served as its first General Secretary) and Murry being among its earliest sponsors; other sponsors included Vera Brittain, Aldous Huxley, George Lansbury, Bertrand Russell and Siegfried Sassoon. Two years later, with the Adelphi Centre commune beginning to disintegrate, the PPU sponsored a number of Basque children and their teachers, refugees from the Spanish Civil War, to live at the Centre<sup>4</sup> as one of the many 'colonies' established by the Basque Children's Committee.

At the end of the civil war in 1939 the children returned to Spain or were



relocated elsewhere in England and their place at the Adelphi Centre was taken by a band of conscientious objectors (also sponsored by the PPU), who were later joined by evacuees from London.

Plowman declared in an early 1941 edition of *"The Adelphi"* that the Adelphi Centre was *"experiencing a great revival.... on the eve of making the Langham Voluntary Service a great pioneering example of creative pacifist living"* but in reality it was on the verge of collapse.

He fell ill towards the end of May 1941 and died of pneumonia on 3<sup>rd</sup> June. Murry and Mary Gamble (who had lived with Murry at Adelphi Cottages, Moor Road) moved in early 1942 to set up a commune at Lodge Farm, Theltenham, Suffolk, where Murry was to die in 1957,

and *The Oaks* was requisitioned. But on 27<sup>th</sup> February 1943 Plowman's widow, Dorothy, delivered at Langham (presumably at *The Oaks*) a valedictory lecture<sup>4</sup> on the history of the Adelphi Centre under the title "If poetry is not a religion, what is?"

## Notes

<sup>1</sup> The headstone and its inscription are thought to be the work of David Kindersley, the celebrated letter-cutter and sculptor, but the supposition is yet to be confirmed.

<sup>2</sup> "Mk VII" was stamped on the base of WW1 British rifle and machine gun cartridges.

<sup>3</sup> See *"An Introduction to the Study of Blake"* and *"The Poems and Prophecies of William Blake"*. The first lines of Blake's *"Jerusalem: England! awake!"* are inscribed on Plowman's headstone.

<sup>4</sup> During the children's stay, the house was known as "Basque House".

<sup>5</sup> Papers in the Alexander Turnbull Library, Wellington, New Zealand.

## CHILDRENS' SOCIETY BOXES 2021

Due to the current lockdown and the Covid pandemic, the Childrens' Society are advising box-holders and collectors to abide by Government guidance at all times, and therefore **NOT** to hand in their collecting boxes until the situation improves. The priority is the safety of everyone involved.

I'd like to thank you all for your commitment and generosity over the past year, and will of course let you know when it is possible to resume a 'normal service'. In the meantime it would be brilliant if you continue to fill your boxes and I shall be pleased to collect them as soon as it is safe to do so.

*Gill Pullen and Denise Hobday*



## Little Owls Pre School Boxted

*Ofsted registered*

[www.littleowlsboxted.co.uk](http://www.littleowlsboxted.co.uk)

Phone: 01206 273226

Email: [littleowlsboxted@live.co.uk](mailto:littleowlsboxted@live.co.uk)

# STEPS FOR HELEN



Aiming to walk, jog or run  
10,000 steps per day?



**Are you doing more walking during lockdown to keep yourself busy and improve your fitness? Why not do it in aid of Helen Rollason Cancer Charity and support local people living with cancer!**

It's free to take part; challenge yourself to walk to some or all of our Cancer Support Centres in and around Essex; simply set your target to walk, jog or run and then get your family and friends to sponsor you as you aim to achieve your goal.

LONDON TO HARLOW

**A to B = 16 miles (32,000 steps)**

HATFIELD PEVEREL TO COLCHESTER

**C to D = 18 miles (36,000 steps)**

HARLOW TO HATFIELD PEVEREL

**B to C = 26 miles (52,000 steps)**

COLCHESTER TO SOUTHEND ON SEA

**D to E = 40 miles (80,000 steps)**

SOUTHEND ON SEA TO LONDON

**E to A = 39 miles (78,000 steps)**



**RECEIVE A  
CHAMPIONS  
MEDAL ONCE  
COMPLETED!**

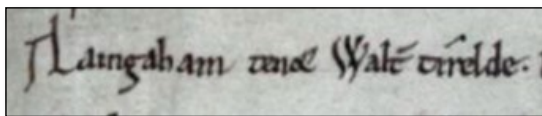


**Sign up and download your sponsorship form today  
at [www.helenrollason.org.uk](http://www.helenrollason.org.uk) and for  
more information call 01245 380719.**

# THE PUZZLE OF 'LANGHAM'

Steve Pollington

A casual inquirer might come upon the place-name *Langham* and immediately conclude



that it comprises two fairly common elements drawn from Old English: *lang* meaning 'long, extensive' and *ham* meaning 'homestead, settlement'. A rather unremarkable name of a common type for a village or estate of which the most notable feature was its size or length.

This is not the case, however. As with Boxted's name (published in the February issue) which turns out to have nothing to do with box hedges, Langham's first element is not related to the word 'long' at all. Checking the Little Domesday records, we find that in 1086 the place was called *Laingabam* (not *lang ham* as would have been expected). "So what?" you may think, "the spelling is a bit off". Early spellings can often be very helpful in determining what a place-name really means.

Other early records of the name point to a different interpretation. These include the mis-divided *La Wingeham* in 1130, *Leingabam* around 1190, and *Lawingeham* in 1197. Interpretations vary, but these spellings all point to an unusual type of place-name which is found across Essex, East Anglia, Kent and Sussex – the type which occurs in Corringham, Tillingham, etc. The format is a short name followed by '*ing-*' and the word '*ham*'. These names are often thought to be quite early – 7<sup>th</sup> century at the latest – because they are applied to settlement types that ceased to exist after that time.

Langham's old name *Lawinga ham* could mean 'settlement of the followers of' a man called

The entry for *Laingabam* in the *Domesdæg* Book. It is owned here (1086) by Walter Tyrrel, who went on to gain notoriety as the man who killed William II in a New Forest hunting accident ... or was it deliberate?

*Lawa* perhaps, or *Laba*. The group would have called themselves *Lawingas*, "Lawa's people." but the name *Lawa* itself is obscure and without parallels. (Possibly a man of a similar name was known in Oxfordshire, because a lake near Cuddesdon was named after him.)

The trail becomes even harder to follow from here because it splits into two. On the one hand *Lawingeham* looks like an early spelling of *Lauanham* but that belongs to Lavenham in Suffolk and is not related to our village.

On the other, *Lawingeham* shares its beginning *Law-* with Lawshall (Suffolk), and that is from *blaw-sele* 'hall by the burial mound'. This is interesting because ancient burial mounds are found in the parish today, in the form of crop marks; the mounds themselves are probably Bronze Age in date and were already two thousand years old when the East Saxons settled in our district. Existing field monuments were treated with respect by the Saxons, who regarded them as the dwellings of supernatural beings, ghosts and spirits.

It is only speculation, but the *Lawingas* who gave their name to Langham could be the 'people who live by the burial mound'.

See P.H. Reaney, *The Place-Names of Essex*, English Place-Name Society Volume XII. (1969) Cambridge University Press.



## CTM CONTRACTING LTD

Fencing & Landscaping Specialists,  
Groundworks, Driveways,  
Patios & Decking.

**07968 904486 01206 273622**

**ctmcontracting@outlook.com**

## HUNNABALL

Family Funeral Services



Here **whenever** you need us  
Funerals | Memorials | Pre-paid Funeral Plans

**Hunnaball of Colchester**  
York House, 41 Mersea Rd, Colchester CO2 7QT  
**01206 760049**  
[www.hunnaball.co.uk](http://www.hunnaball.co.uk)

Here for you  
every hour  
of every day



W.H. Shepherd  
93-94 High Street, Colchester  
**01206 805941**

[www.eastofengland.coop/funerals](http://www.eastofengland.coop/funerals)



FARM & WOODLAND SERVICES

## **BOB'S LOGS & KINDLING**

Open fire/wood burner      Barn stored

Mobile: 07733 326644

Tel: 01206 391146



Dog Grooming  
*By Sarah Wilson*

Gunn Hill, Ipswich Road  
Colchester, Essex, CO1 6HR  
T: 07963 938716      [thehoundlounge@yahoo.com](mailto:thehoundlounge@yahoo.com)

## **RUSSELL SMITH**

*High Quality Painter & Decorator*

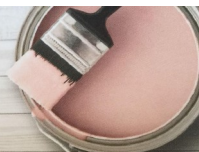
Jon-Pat, School Road,

Langham, Colchester

Tel: 01206 323520

**\* SPRUCE IT UP ! \***

Interior Painting  
and Decorating



"Moving in ?" "Moving out ?" "New colour scheme ?"  
Freshen up interior walls and paintwork with local lady decorator

Contact Lynn : 07837711808

## **Boxted Arts and Crafts**

Scheduled dates for meetings.

**2021**

**March 3 & 17, April 20, May 5 & 19, June 2 & 16,  
July 6 & 21.**

Contact: [anne@naret.plus.com](mailto:anne@naret.plus.com)

**Please mention the Newsletter when replying to advertisements**



## At Your Service

ADVERTISING QUERIES SHOULD BE DIRECTED TO [BOXLANGADS@GMAIL.COM](mailto:BOXLANGADS@GMAIL.COM)



PENROSE VETERINARY GROUP LTD  
70 Brinkley Lane Highwoods 01206 842608

8.30 - 6.30 weekdays, late weekday,  
Saturday & Sunday morning surgeries

Also at:  
Peeler's End Stratford St Mary 01206 323414  
9.00 - 2.30 & 2.30 - 6.30pm surgeries

*A. Clarke*  
**MEMORIALS**  
*Est. 2004*

01206 761167

[www.aclarkememorials.com](http://www.aclarkememorials.com)

[info@aclarkememorials.com](mailto:info@aclarkememorials.com)

Follow us on facebook



For ALL Advertising  
Queries, contact

**Paul Armstrong**

[boxlangads@gmail.com](mailto:boxlangads@gmail.com)

Tel: 01206 616604



WIG LANE  
STRAIGHT ROAD  
BOXTED, ESSEX,  
CO4 5QX

[enquiries@theboxtedwig.co.uk](mailto:enquiries@theboxtedwig.co.uk)

[www.theboxtedwighairsalon.co.uk](http://www.theboxtedwighairsalon.co.uk)

PHONE: 07712596837

### CARISMA BODYTECH LTD

YOUR LOCAL GARAGE

Services Repairs Bodywork MOT Insurance work

01206 228221

[carisma.kerry@btconnect.com](mailto:carisma.kerry@btconnect.com)

Brookhouse Farm Boxted Road  
Colchester CO4 5HH

## PRINT-IT COLCHESTER

A LOCAL. INDEPENDENT. FAST. EFFICIENT BESPOKE PRINTERS

Personalised service tailored to you and all of your printing needs.

We offer a large range of printed products with a fast turn-around time,  
wide-format colour and black and white printing and plotting up to A0 size,  
perfect for all your constructional planning needs.

Poster printing • Leaflets • Plan Printing • Laminating  
Foiling • Business Cards and stationary • Brochures  
Booklets • Invitations • Certificates • Book covers  
Menus • NCR Pads • Pop Up Banners • Canvases

Local - National - International

Print-It Colchester, Gun Hill Trading Est.,  
Dedham, Colchester, Essex, CO7 6HR  
01206 323582 / [www.print-itcolchester.co.uk](http://www.print-itcolchester.co.uk)  
[sales@printitcolchester.co.uk](mailto:sales@printitcolchester.co.uk) / [printitcolchester](http://printitcolchester)



Please mention the Newsletter when replying to advertisements

*At Your Service*

ADVERTISING QUERIES SHOULD BE DIRECTED TO BOXLANGADS@GMAIL.COM

**JOHN TOKELY**

**Painter & Decorator**

No job too large or small.

9 Nayland Road Colchester CO4 5EG

Mobile: 07976 848310 Tel: 01206 845665

**STEVE RAYNER**

**House/Garden Maintenance**

Grass/Hedge cutting \* Weed control \* Clearance \*  
Small tree work \* Gutters cleared \* Gates/Fencing\*  
Shed Services

Mobile: 07709 972728

**BS GARDEN MAINTENANCE**

Hedge & Grass Cutting \* Pruning  
Planting \* Painting & Odd Jobs \* Winter Logs

Mobile: 07513 150526

Tel: 01206 273292



Colchester Ipswich Sudbury Clacton Thorpe-le-Soken

**01206 572233**

[colchester@palmerpartners.com](mailto:colchester@palmerpartners.com)

**Palmer & Partners**

**Independent Estate & Letting Agents**



London House, High Street,  
Dedham Colchester CO7 6HA

Tel: 01206 322674 Mob: 07732 039726

Email: [nicola.pedicare@gmail.com](mailto:nicola.pedicare@gmail.com)

Web: [www.pedicarefootclinic.co.uk](http://www.pedicarefootclinic.co.uk)

**Dedicated to the care of your feet**

**USE  
LANGHAM COMMUNITY SHOP  
AS YOUR  
DELIVERY ADDRESS**

**YOUR PARCELS  
STORED UNTIL COLLECTED**

Collection charge £1.50

Langham Community Shop

School Road Langham

Colchester Essex CO4 5PA



NPTC Qualified and Fully Insured

24hr emergency tree work • Stump removal  
Pruning and Pollarding • All tree work undertaken  
Hedge reduction and maintenance • Felling  
Crown thinning and shaping  
We also offer a wide variety of  
gardening services

Call Kyle on 07730393041

Call Jason on 07494572224

[ArborX.uk@gmail.com](mailto:ArborX.uk@gmail.com)

**Allen Clarke**  
Plumbing & Heating Ltd  
TRADITIONAL VALUES | MODERN SOLUTIONS

**Family run, recommended business based  
in Layer de la Haye Colchester**

- Full heating systems
- Full bathroom installation
- Boiler installations
- Servicing and repairs on oil, LPG and gas boilers
- Oil tank replacement and installation
- Air to air heat pumps
- Landlord Gas Safety Inspections
- Over 20 years' experience



[www.allenandclarkeplumbingandheatingltd.co.uk](http://www.allenandclarkeplumbingandheatingltd.co.uk)

**Telephone: 01206 738979**



**Please mention the Newsletter when replying to advertisements**

*Langham and its Parish Council  
need **YOU!***

The Parish Council needs new members to enable it to continue efficiently.

This Council represents the Village and looks after its interests.

If new members are not elected or co-opted to bring the Council up to its full capacity, there is a possibility that the Council could be disbanded. This would result in the interests of the village being passed over to others, with no representation from the village residents. This could be the end of Langham as we know it, an independent rural village, not just another village that is swallowed up by Colchester.

We need enthusiastic residents of Langham to step forward and join the Council before it is too late.

If you want to find out more please contact the Parish Clerk on

**[clerk@langhamparishcouncil.co.uk](mailto:clerk@langhamparishcouncil.co.uk)**

**ANGLIA LANDSCAPES**

01206 272357

All groundworks carried out

Suppliers of:

\*10mm stone \*Sand \* 20mm stone  
\*Topsoil \*Plainings \*Crushed concrete

*Collected or delivered*

**HAIRDRESSER IN LANGHAM**

≈ Ladies & Gents trim £10 Child £8

≈ Blowdry £12 / £15 set £12

≈ Regrowth tint £28 / £31 inc b/dry

≈ Perms inc set / b/dry £34 / £39

≈ Foils inc b/dry £28/£33/£38

**Call Katrina on 233435**

**Simmons Building Services  
(South East) Ltd**

**New Build, Extensions, Refurbishments,  
Groundworks, Driveways, Patios**

**Priory House, Boxted Straight Road, Colchester CO4 5RB**

**Telephone: 01206 273375**

**Mobile: 07961 932476**

**[danny@simmonsbuildingservices.co.uk](mailto:danny@simmonsbuildingservices.co.uk)**



# Joined up Legal Services

for you

your  
family

and your  
business

Contact us today to make an appointment.  
Legal advice with a conscience.

**FJG**

**FISHER  
JONES  
GREENWOOD  
SOLICITORS**

Fisher Jones Greenwood LLP  
Charter Court,  
Newcomen Way,  
Colchester Business Park,  
Colchester, Essex, CO4 9YA

**01206 700585**

www.fjg.co.uk  
enquiry@fjg.co.uk  
Offices across Essex and London

## PW BODY REPAIRS LTD

Insurance work, Dents/Scuffs, End of lease cars, Vans,  
Motorhomes and Caravans

01206 323126/ 07785 268971

pwbodysrepairs@gmail.com

Birchwood Farm Unit W, Birchwood Road CO7 6HX

## J B BOILERS

**Oil Boiler & Aga Maintenance**

**Mobile: 07885-504036**

## FUTURE ELECTRICAL LTD

**YOUR LOCAL ELECTRICIANS**

Call Chris on 272494 or 07798 865377

Free quotations    Qualified & Registered

Family Business    *future\_@mail.com*

## PEST CONTROL

**Domestic and commercial.  
All Insects and Rodents**

Incl. Rats. Mice, Moles, Rabbits Wasps  
Cockroach, Bed-Bugs Ants. Etc.

\*\*\*Bird control and netting\*\*\*

**Fast Friendly Service.**

**07432 441949**

**Cage Lane Boxted. CO4 5RE**

**All Colchester postcodes, plus Ipswich and  
surrounding area**

**XJR41@AOL.COM**

**STAR**  
Painting & Decorating Services  
Exterior & interior decorators

**No Job Too Big  
No Job Too Small**  
Domestic and commercial properties  
We pride ourselves on customer service

Can we help with those garden issues?

- \* Hedge trimming
- \* Grass cutting
- \* Returfing
- \* Planting

Reliable service guaranteed  
**Call us on 01206 617646 / 07379 449020**  
starpaintdecor@gmail.com  
www.stardecoratingservices.co.uk  
FIND US ON FACEBOOK

## Nigel Goody

### Computer Maintenance & Repairs

Virus Removal – Upgrades – Email Problems

Networks & WIFI – Printer Issues/Setup

Friendly, helpful on site service

Call me on: 07929 919599





## *Available for Hire*

A flexible venue with a choice of large, medium and small rooms, all with kitchen facilities.

Pleasant rural village setting with dedicated parking.

Conveniently situated on the Essex/Suffolk border close to the A12.

If you have any questions about the facilities, or would like to arrange a visit to have a look around, please contact our **Commercial & Marketing Manager, Sue Armstrong** in the first instance. Her contact details are:

**Tel: 01206 271127 or 07741 284132**  
**email: [LanghamCC@gmail.com](mailto:LanghamCC@gmail.com)**

## **LANGHAM COMMUNITY COUNCIL**

**requires a NEW SECRETARY**

The Community Centre is at the heart of the village and, as well as three rooms for hire, houses Langham Community Shop and Langham Pre-School.

We are a busy Centre with many local and commercial bookings dealt with by our Marketing Manager.

We would welcome someone with fresh ideas and enthusiasm. If you would like to be part of a team of Trustees who volunteer their time to keep Langham Community Centre well-maintained and financially viable, please contact Interim Secretary **Paul Armstrong** on **01206 616604** or email

[langhamccsecretary@gmail.com](mailto:langhamccsecretary@gmail.com)

**Someone at the door?  
Suspicious new email?  
Strange letter in the post?  
Unknown phone call?**

### **Stop**

Think before you act.

### **Challenge**

Are you certain of their intentions?

### **Check**

Are you sure they are who they say they are?

### **Protect**

Contact a trusted person immediately if in doubt.

[crimestoppers-uk.org/  
keeping-safe/safer-streets](http://crimestoppers-uk.org/keeping-safe/safer-streets)

**CrimeStoppers.**

**0800 555 111**

100% anonymous. Always.

## Bespoke & Traditional Cakes & Desserts

- Cooking for you  
is what we do

Shop Open

Tues-Sat • 9am-4pm

Orders also taken

We look forward to your custom



Tel: 01206 272100

61 Straight Road, Borted, Colchester, CO4 5QY

[www.pantry61.co.uk](http://www.pantry61.co.uk)

## mark & peter graves

carpenters & general builders

a family run business providing a professional  
service and quality workmanship at competitive rates.

general interior & exterior property improvements/maintenance  
including: painting, kitchen installation, shelving, cupboards, ward-  
robes, flooring, windows, doors, architraves, skirting boards, gutter-  
ing, fascias, roofs, extensions, conversions, renovations, garages,  
new build, decking, patios, fencing, sheds and barns.

all jobs considered

tel: 07889 947150 (day) or

01206 271173 (evening)

## Michael J Byles

Plumbing & Heating

Oil Boiler Installations Servicing & Maintenance

Oftex Registered

General Plumbing & Heating work also undertaken

Telephone 01206 822225 Mobile 07717 012433

E-mail: [michaeljbyles@aol.com](mailto:michaeljbyles@aol.com)

## ARDLEIGH CHIMNEY SWEEP SERVICES

- Traditional and Power Sweeping
- CCTV Inspections
- Safety Certificate Issued
- Fully Insured
- Cows Fitted



ANDREW SMITH

01206 231718

07845 249820



## WHEELCHAIR LOAN

The Short Term Wheelchair Loan Charity (Reg.  
No. 112657, [www.wheelchairloancharity.com](http://www.wheelchairloancharity.com)), based at Clacton  
Hospital, helps people needing the short-term use of a  
wheelchair. The chairs are for all ages and reasons. The  
service is a perfect interim solution if you require a  
wheelchair for an occasion such as a holiday, a wedding or  
to help accommodate a visiting relative. The service is  
funded by donations and is free to users, although a deposit  
of £40 from borrowers is asked for.

Enquiries may be phoned to 01255 201763 or emailed to  
[wheelchairloan@gmail.com](mailto:wheelchairloan@gmail.com)

**DAILY HOPE - A FREE PHONE LINE  
OF HYMNS, REFLECTIONS AND PRAYERS.**

Available 24 hours a day on **0800  
804 8044**, it has been set up for those  
unable to join in online church services  
during the period of restrictions.

## DEDHAM VALE

NPTC Qualified Fully insured  
24 hr emergency tree work  
Hedge maintenance and reduction  
Logs, kindling and woodchips supplied



## TREE SURGERY

All tree work undertaken Crown reduction & shaping  
Crown lifting & thinning Pruning & pollarding  
Felling, sectional dismantling Stump grinding  
Specialising in big trees in delicate situations

[info@dedhamvaletreesurgery.co.uk](mailto:info@dedhamvaletreesurgery.co.uk)

[www.dedhamvaletreesurgery.co.uk](http://www.dedhamvaletreesurgery.co.uk)

mobile 07756 811098

phone 01206 323056

Please mention the Newsletter when replying to advertisements

**THE PARISH OF LANGHAM  
WITH BOXTED**

**Contact Details**

**Website** www.lb-churches.co.uk

**Rector** The Revd Dr Mandy Elmes,

The Rectory Church Close West Bergholt, CO6 3JZ

01206 240906 Mobile: 07872 649967

Email: revmandyelmest@btinternet.com

**Assistant Curate** Revd Anne Mason

01206 851792 / 07895 970834

revdannemason@gmail.com

**Lay Minister** Denise Hobday 230918

**Church Administrator** (for the parishes of  
Langham with Boxted, West Bergholt and Great  
Horkesley) Janine Wilde 243683

Email: lwb.wb.gh.parishes@gmail.com

**Church Office currently closed due to COVID19 -  
all enquiries through email please.**

**Churchwardens**

**St Mary's Langham**

**Stephen Garner** 272599

Sgarner.22@btinternet.com

**Denise Hobday** 230918

hobdaylangham@hotmail.com

**St Peter's Boxted**

**Dominic Shiel** 273324

**Zone Youth Group**

**Dominic & Linda Shiel** 273324

**The Edge Youth Group**

**Dominic & Linda Shiel** 273324

oOo

**St Mary & St Peter Newsletter**

**Editor** Stephen Pollington 683670

Email: lwbnewsletter@gmail.com

**Advertising** Paul Armstrong 616604

Email: boxlangads@gmail.com

**Distribution**

**Ann Barnard (Boxted)** 272349

**Andrew Stacey (Langham)** 272806

**BOXTED VILLAGE HALL**

Cage Lane, Boxted, CO4 5RE

**Contact**

**Debbie Eley**

Telephone:- 01206 870266

Email:- [boxted@community-centre.org.uk](mailto:boxted@community-centre.org.uk)

Home to a number of local clubs and regular activities, it is also available for hire for parties and functions, with a capacity of 120 seated in rows or 100 seated at tables.

*If you have any new clubs or events planned in the future, please consider using the village hall as your venue.*

**Deadline for submissions for the  
April edition:  
15th March**

**Contact the editor via email:  
[lwbnewsletter@gmail.com](mailto:lwbnewsletter@gmail.com)**

**NEED TO TALK TO SOMEONE?**

**SAMARITANS**

Available 24 hours a day

116 123

34 Walsingham Rd,  
Colchester CO2 7BP

**Open 10am to 8pm daily**

**01206 561234**



Fast, efficient and affordable Legal Services for all ages

Will writing  
Lasting Powers of Attorney  
Probate & Estate Administration

Contact us today for a free consultation

Tel: 0800 689 0386  
Email: [info@afclegal.co.uk](mailto:info@afclegal.co.uk)  
Web: [www.afclegaltd.co.uk](http://www.afclegaltd.co.uk)

The Hub Business Centre  
Hubbard Way  
2 Civic Drive, Ipswich, IP1 2QA

## THE DEDHAM VALE DELI

[WWW.DEDHAMVALEDELI.CO.UK](http://WWW.DEDHAMVALEDELI.CO.UK)

Your local online deli service bringing curated artisanal products direct to your door.

- Hand Crafted Cheese
- Oils & Vinegars
- Nibbles with Drinks
- Bakery, Crackers & Accompaniments
- Ethically sourced Teas & Coffees
- Gift Hampers & Holiday Cottage Welcome Boxes
- Olives & Antipasti
- Meze & Tapas
- Charcuterie & Fish
- Healthy Snacks
- Preserves, Jams & Honey

ORDER YOUR DELI DELIGHTS, DELIVERED TO YOUR DOOR:

[WWW.DEDHAMVALEDELI.CO.UK](http://WWW.DEDHAMVALEDELI.CO.UK)

